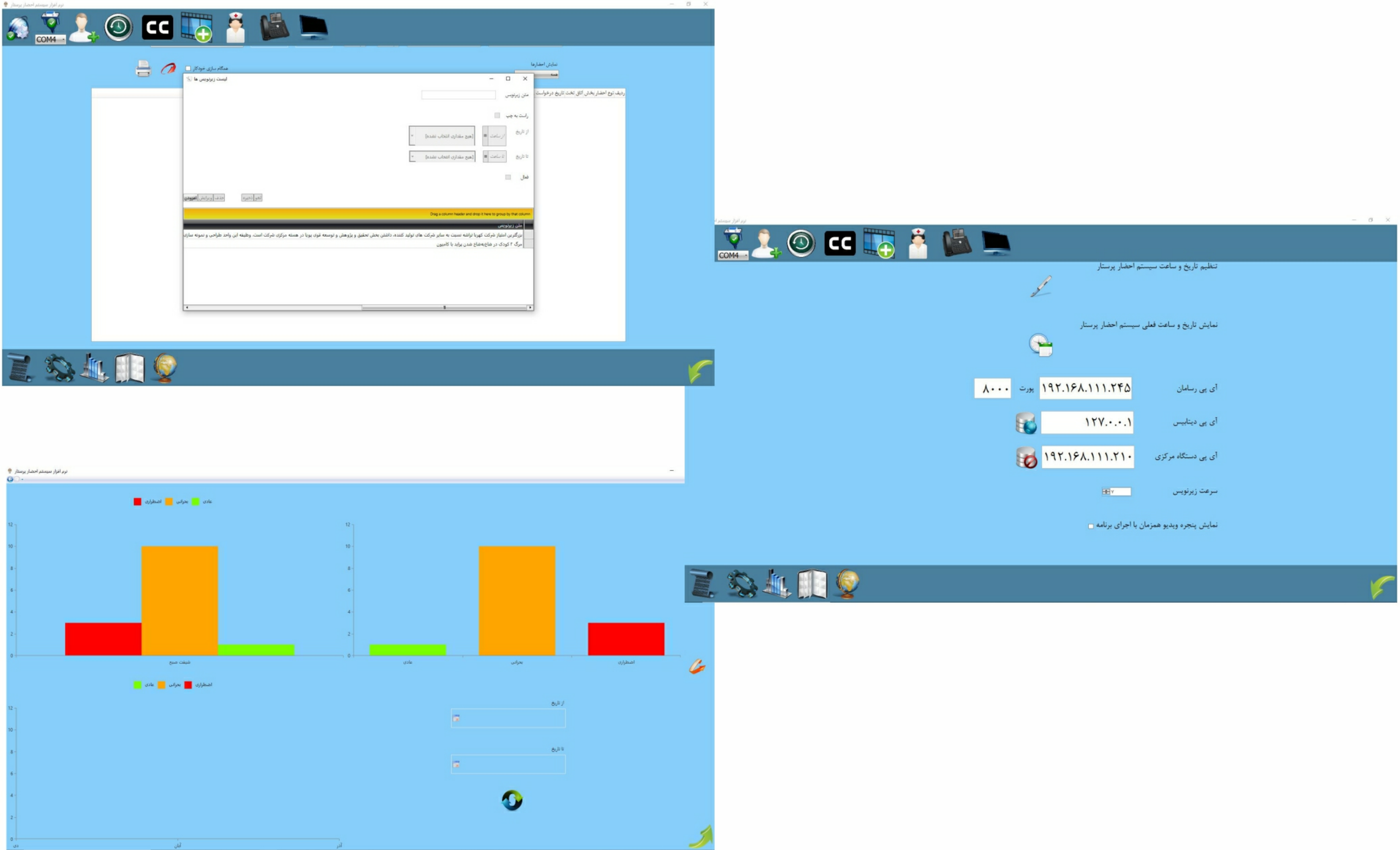


**WIRELESS- NCS - MANAGEMENT REPORTING S.W.(CUS)**

CUS is the management software connecting one or several staff displays to the management report displaying computer through the LAN network of the hospital. It can Record, Monitor and Analyze Call types, Staff Performance, Call Response Delay and Call Breaches in any given time period. The reports can be in PDF format or column charts. The staff displays and the reporting computer should be always ON to monitor and log the events of the report.


**Technical Specifications:**

Required Operating System	Windows 10/Server
Required H.D.D.	Min.120 GB
Required RAM	Min 4G
Required Hardware	Ethernet Port
Required Processor	Min Core i3 or equivalent
Centralized Database	MS SQL