

WIRELESS NCS-STAFF DISPLAY UNIT (CUN02-W)

CUN02-W is the display unit installed in the management center. It is used to display the three highest priority Calls (i.e : Code Blue , Washroom , Bed) in a queue of maximum 32.

The higher priority calls are visually marked by both the location on the display (Top left for the highest to bottom right for the lowest) and a colored border (Blue color for Code Blue , Red color for Washroom & No colored border for Normal bed calls).

The highest priority is for Blue Code followed by Washroom calls as the second highest followed by Normal calls from the Bed as the lowest priority. Same priority calls are prioritized chronologically.

The Alarm for a new call regardless of the type is played by an internal speaker with melodies stored on a local Micro-SD card. CUN02-W can be connected to a PC through LAN for Reporting Purpose.

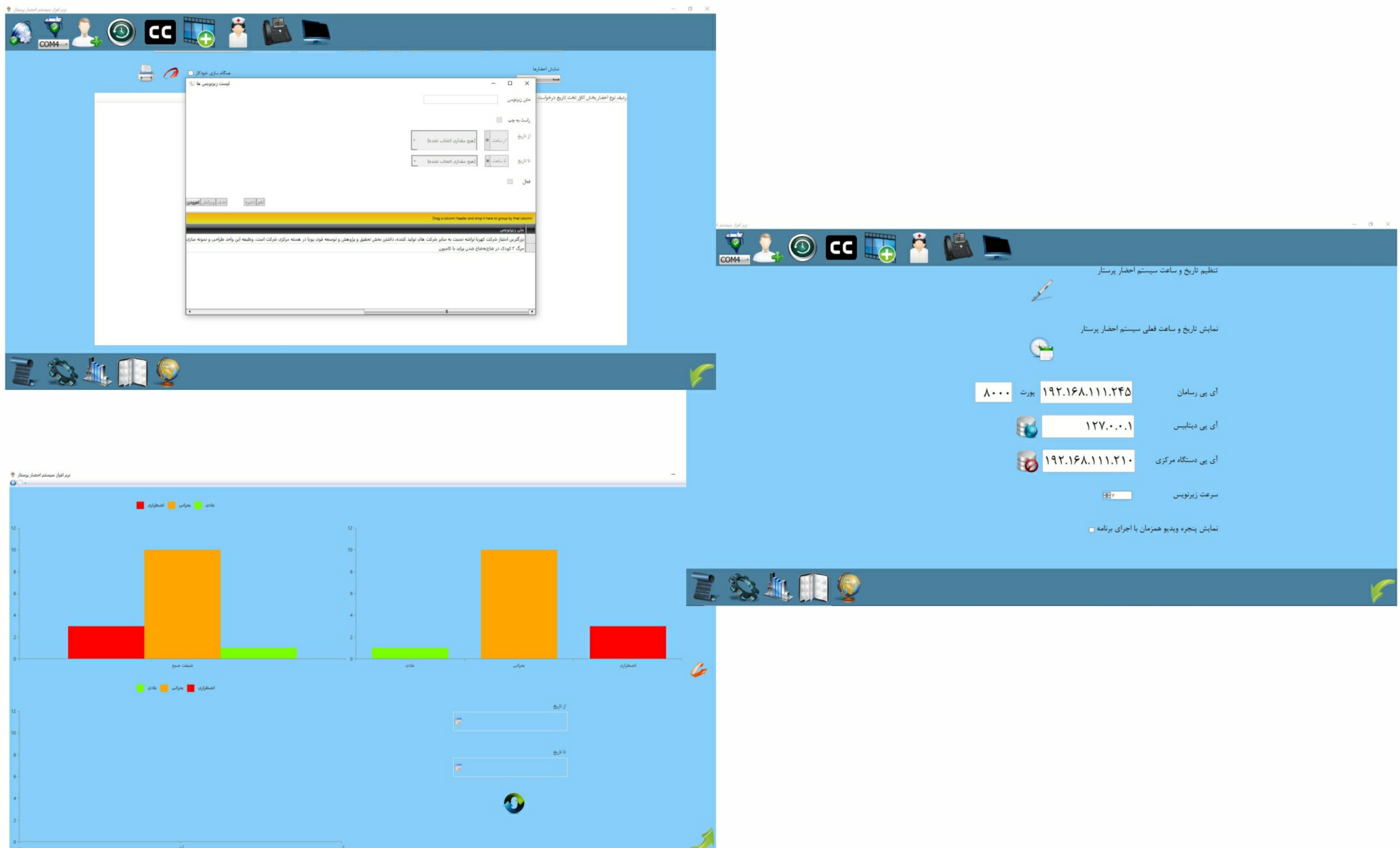


Technical Specifications:

Weight	918 g		
Dimensions	W: 245 mm	H: 178 mm	D: 47 mm
Raw Material	Plexiglass + Plexiprint		
Color	White		
Power Supply	5 V via external AC adapter		
Display Type	7-inch TFT		
Internal Speaker	2 W, 8 Ohms		
Wireless Range	100 meters radius outdoors		
Wireless Frequency	433 MHz		
Port	RJ45 via Crossed Cable for Reporting purpose		
Operating Temperature	-10°C ~ +50° C		
Operating Humidity	30% ~ 80% RH		
Mounting	Surface / flush		

WIRELESS- NCS - MANAGEMENT REPORTING S.W.(CUS)

CUS is the management software connecting one or several staff displays to the management report displaying computer through the LAN network of the hospital. It can Record, Monitor and Analyze Call types, Staff Performance, Call Response Delay and Call Breaches in any given time period. The reports can be in PDF format or column charts. The staff displays and the reporting computer should be always ON to monitor and log the events of the report.

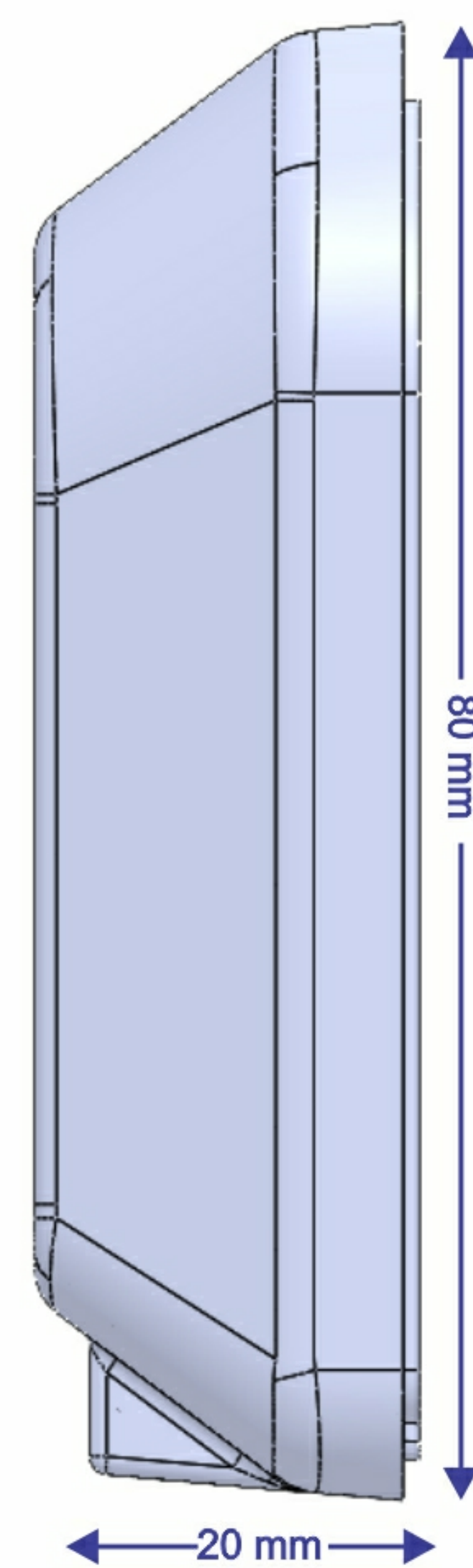


Technical Specifications:

Required Operating System	Windows 10/Server
Required H.D.D.	Min.120 GB
Required RAM	Min 4G
Required Hardware	Ethernet Port
Required Processor	Min Core i3 or equivalent
Centralized Database	MS SQL

WIRELESS NCS- WIRELESS SIGNAL REPEATER (WR-02)

WR-02 repeater boosts the radio frequency signals transmitted by wireless call modules to reach the staff display when the facility has an architecture with obstacles for the 433MHz radio frequency signal.


Technical Specifications:

Weight	70 g		
Dimensions	W:80 mm	H: 80 mm	D: 60 mm
Raw Material	ABS		
Color	white		
Power Supply	5 V		
Frequency Bands	433 MHz		
Operating Temperature	-10°C ~ +50° C		
Operating Humidity	30% ~ 80% RH		
Mounting	Surface		

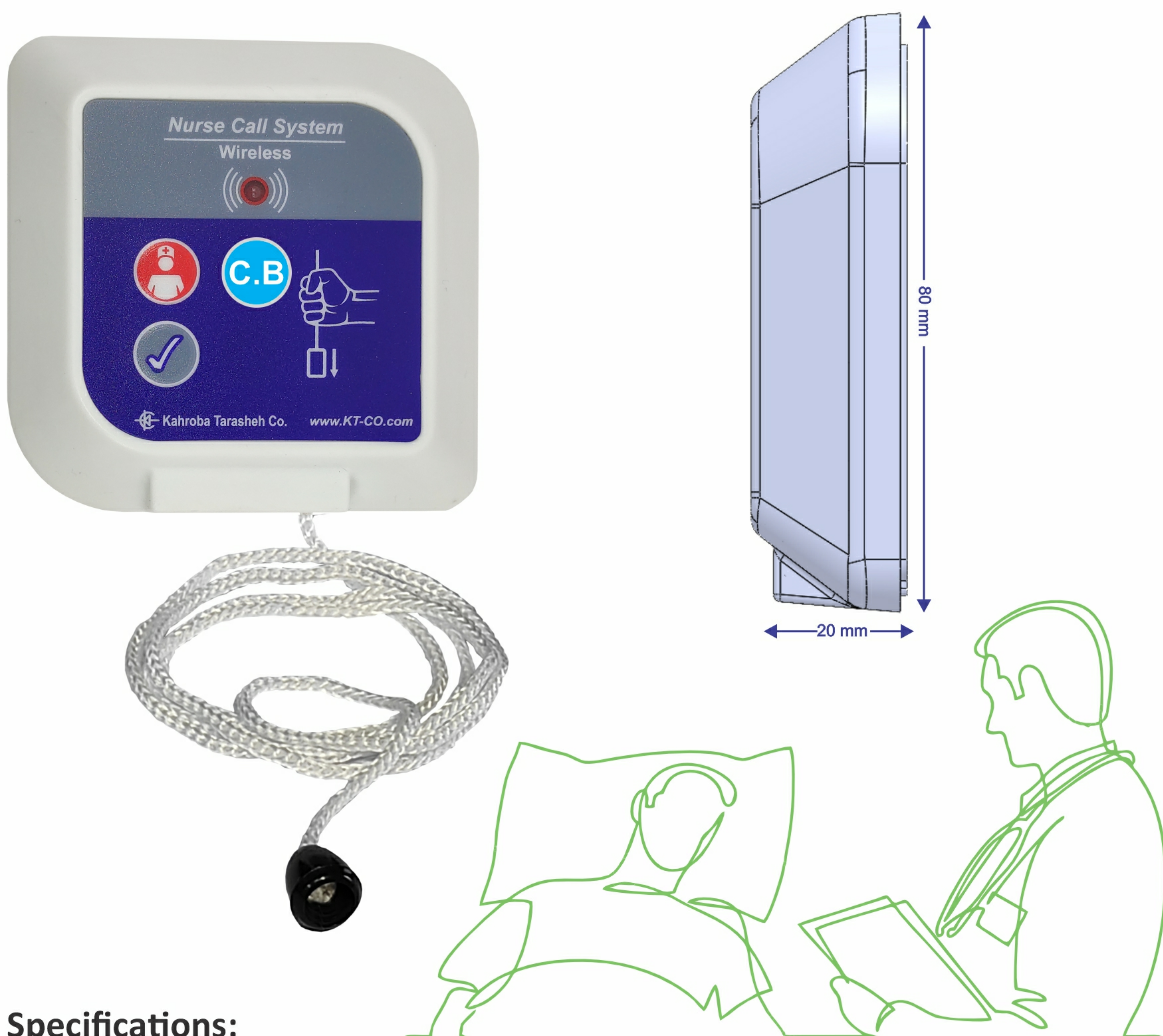
WIRELESS NCS- WIRELESS PULL CORD SWITCH (WT-02)

WT-02 is used in patient's bathroom, shower or similar areas making the call easier by pulling the cord and therefore activating a Nurse call on the management Staff Display.

WT-02 comes with nurse call , Cancel/Presence and Code blue switches on the panel and is powered by a battery to prevent any electrical shock due to wet environment.

This module is equipped with low-level battery indicator feature to help the staff replace the battery when needed.

It has ingress protection rating (IP) against liquids up to IPX5.


Technical Specifications:

Weight	60g		
Dimensions	W : 80mm	H : 80mm	D :20 mm
Raw Material:	Polycarbonate + ABS		
Color	White		
Power Supply	12 V Battery		
Battery Type	23A Alkaline		
Battery Life	6 Months		
Wireless Range	100 meters radius outdoors		
Wireless Frequency	433 MHz		
Cord Capacity	Max 20 Kg		
Operating Temperature	-10°C +50°C		
Operating Humidity	30-% 80% RH		
Mounting	Surface/Flush		

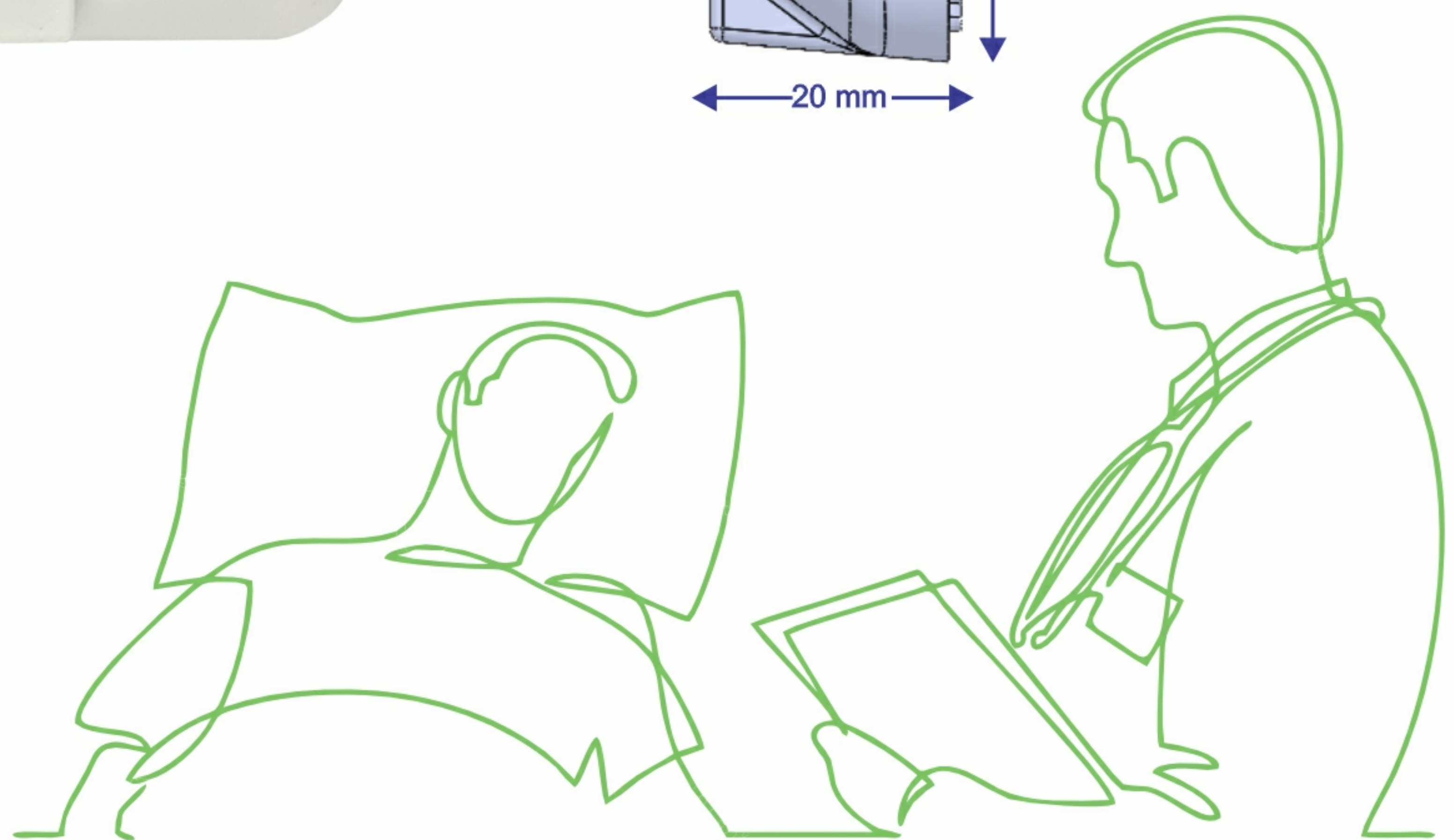
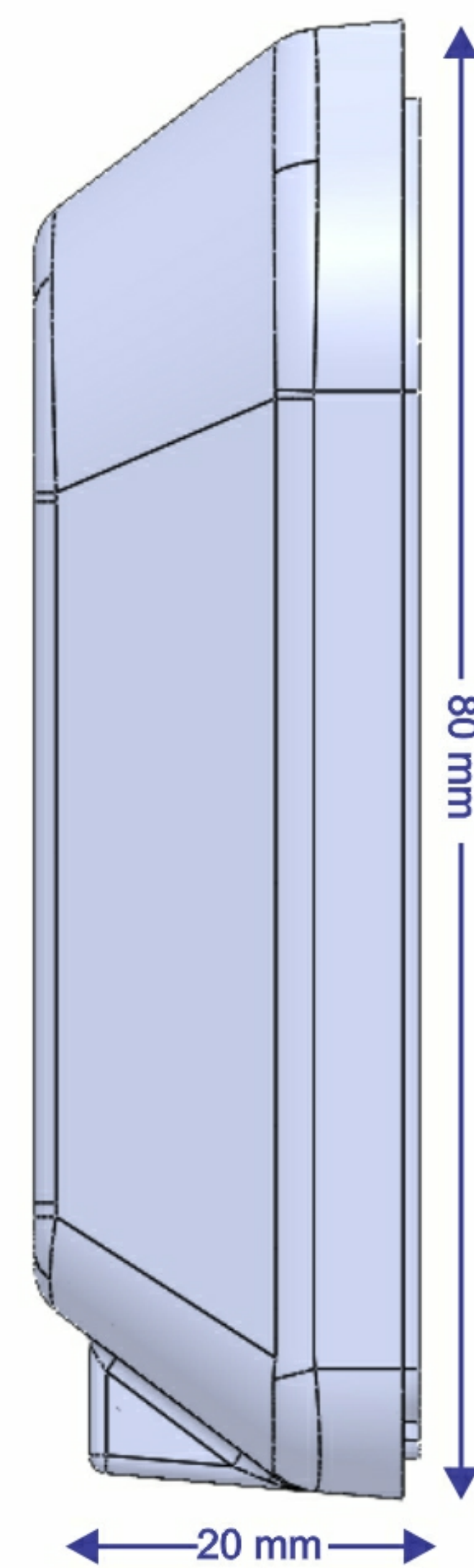
WIRELESS NCS - PATIENT PANEL (WB-02/P)

WB-02 comes with an RJ9 socket for Pear push Switch (PBW-01). It has a Blue code, Normal Nurse Call and a Cancel/Presence Switch onboard.

It is powered by a 3 V coin Battery or an external 5 VDC power adapter version (WB-02P) to eliminate the battery life issue.

It can be installed easily next to patient's bed regardless of the wiring layout of the facility.

This module is equipped with low-level battery indicator feature to help the staff replace the battery when needed.



Technical Specifications:

Weight	60g		
Dimensions	W : 80mm	H : 80mm	D:20 mm
Raw Material:	Polycarbonate + ABS		
Color	White		
Power Supply	12 V Battery		
Battery Type	23A Alkaline		
Battery Life	6 Months		
Wireless Range	100 meters radius outdoors		
Wireless Frequency	433 MHz		
Cord Capacity	Max 20 Kg		
Operating Temperature	-10°C +50°C		
Operating Humidity	30-% 80% RH		
Mounting	Surface/Flush		

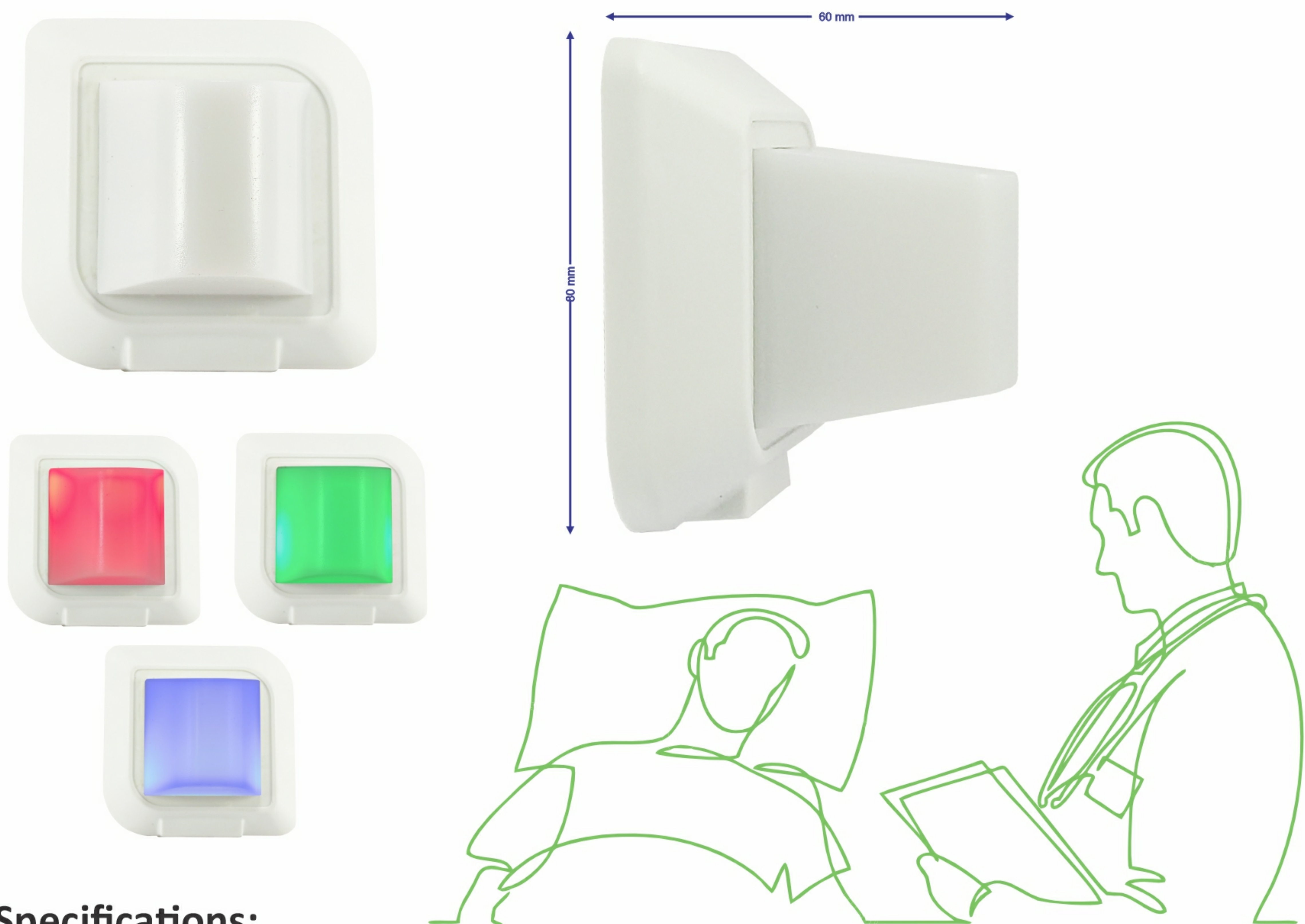
WIRELESS NCS- Corridor Status Light (WL-02)

WL-02 is a dome-shape wireless corridor light installed above the door of the patients room. It can support up to 10 wireless nurse calling devices in the room next to the beds or in the washrooms.

WL-02 has 3 different colors for 3 priority levels as below:

- 1-Steady Green for Normal calls.
- 2-Blinking Red for emergency calls/washrooms.
- 3-Steady Blue for Blue code Emergency Code Call.

The WL-02 also acts as a repeater/booster to pass the initiated 433 MHz call signal from the calling switch in the room to the staff display and therefore eliminating the need for WR-02 repeater implementation in most cases.



Technical Specifications:

Weight	75 g		
Dimensions	W: 80 mm	H:80 mm	D:60 mm
Raw Material	ABS		
Color	White		
Power Supply	5 V /1 A DC via external adapter		
Max. Transmitter Support	10		
Wireless Range	100 Meters Radius Outdoors		
Wireless Frequency	433 MHz		
Light Type	LED		
LED Colors	Green/Red/Blue		
Operating Temperature	-10°C ~ +50°C		
Operating Humidity	30-% ~ 80% RH		
Mounting	Flush/Surface		

WIRELESS NCS- PEAR- PUSH PENDANT SWITCH (PBW-02)

PBW-02 is the pear-push pendant nurse call switch. It can be used by mobile patients as a pendant or be placed on a cradle next to the bed for the stationary patients.

Pressing the PBW-02 pear push switch activates a nurse call on the wireless staff display (CUN02-W) alerting the management staff of the call.

This module is equipped with low-level battery indicator feature to help the staff replace the battery when needed.


Technical Specifications:

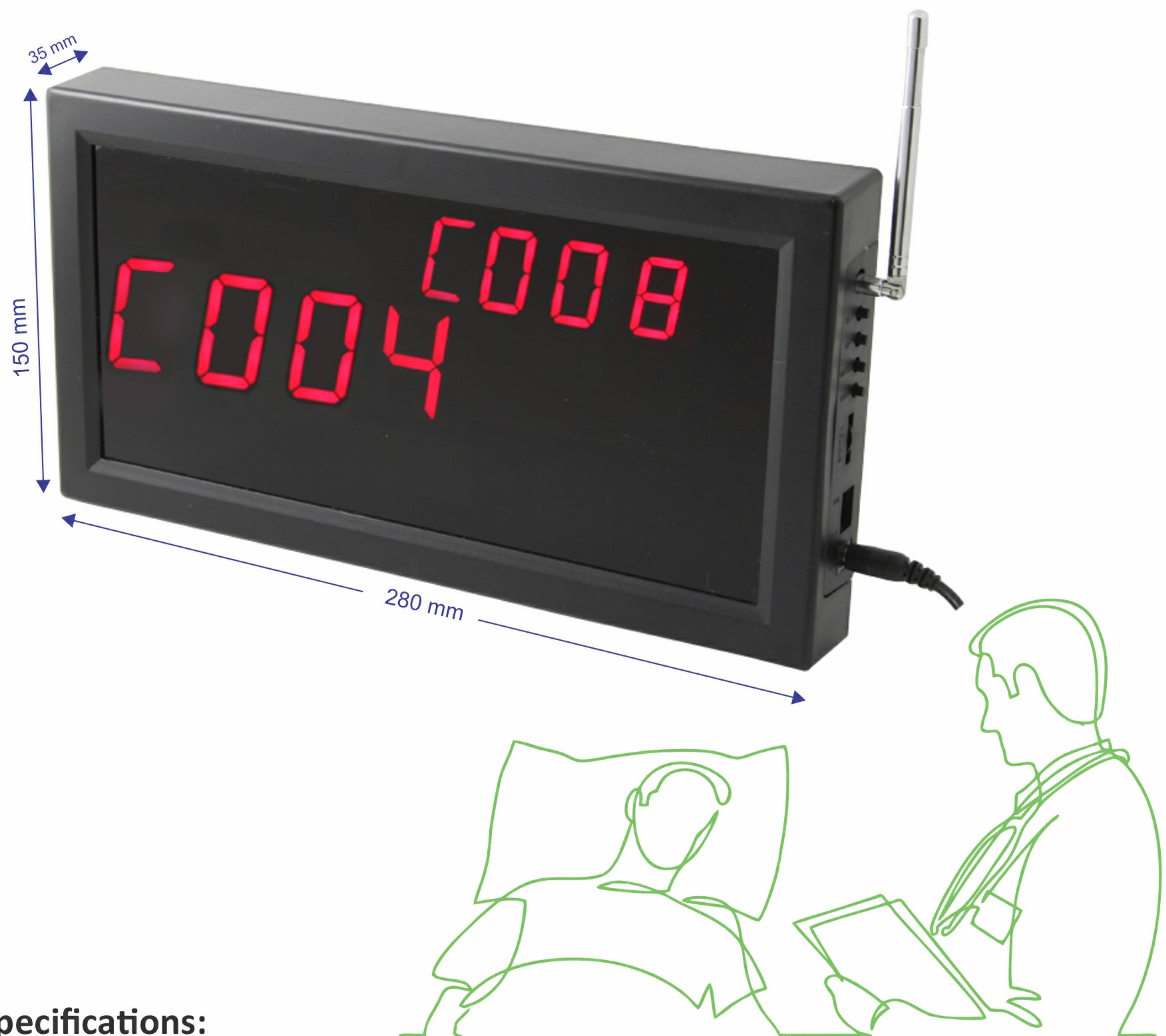
Weight	40 g		
Dimensions	W:40 mm	H:100 mm	D: 28 mm
Raw Material	Polycarbonate +ABS		
Power Supply	3 VDC Coin Battery		
Color	White		
Wireless Range	100 meters radius outdoors		
Wireless Frequency	433 MHz		
Operating Temperature	-10°C ~ +50°C		
Operating Humidity	30-% ~ 80% RH		
Mounting	Cradle / Pendant		

WIRELESS NCS-STAFF DISPLAY UNIT (K-USB)

K-USB is a Seven-segment display unit installed in the management center as the Wireless staff console of Wireless Nurse Call System. It is used to display the number associated to the calling unit to management staff.

The Alarm for a new call is played by an internal speaker and a reminder can be set to repeat the alarm in predefined intervals.

K-USB has a queue management on 400 incoming calls and displays the first 3 calls in chronological order. The display shows the current time when there is no active call present.



Technical Specifications:

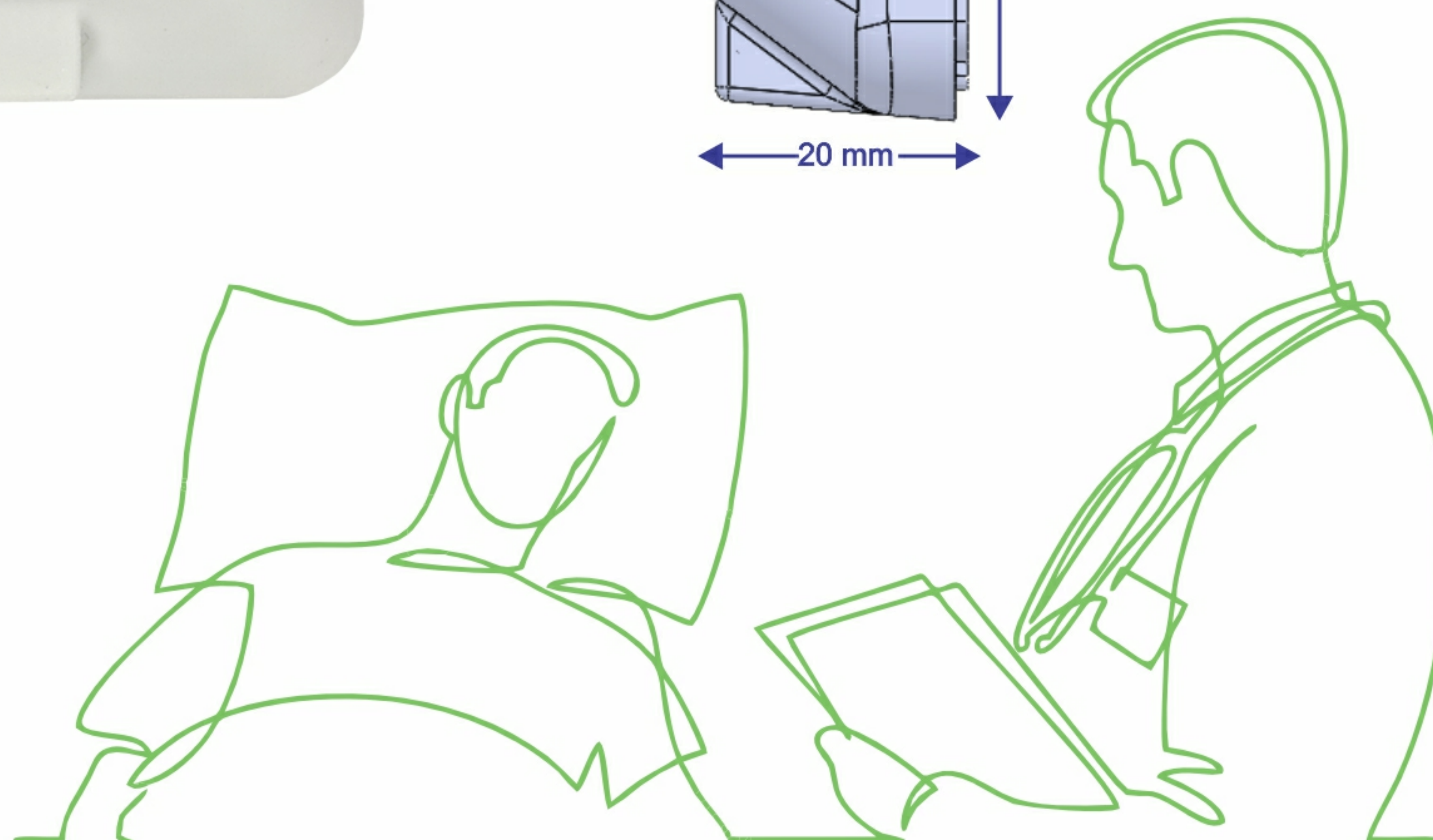
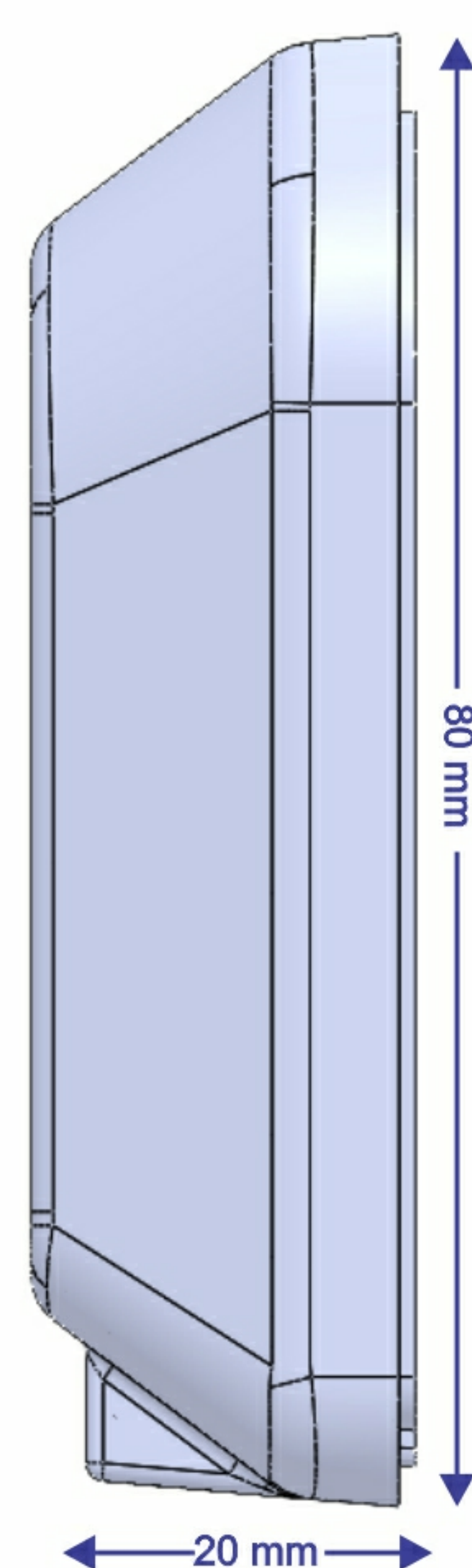
Weight	588 g		
Dimensions	W: 280 mm	H: 150 mm	D: 35 mm
Raw Material	Plexiglass		
Color	Black		
Power Supply	12 V DC via external adapter		
Display Type	Seven-Segment		
Internal Speaker	1 W, 8 Ohms		
Wireless Range	100 meters radius outdoors		
Wireless Frequency	433 MHz		
Operating Temperature	-10°C ~ +50° C		
Operating Humidity	30% ~ 80% RH		
Mounting	Surface		

WIRELESS NCS - PATIENT PANEL (WB-01/P)

WB-01/P comes with an RJ9 socket for Pear push Switch (PBW-01). It also has a Nurse Call and a Cancel/Presence Switch onboard.

It is powered by a 12 V Alkaline Battery or an external 12 VDC power adapter version (WB-01/P) to eliminate the battery life issue.

It can be installed easily next to patient's bed regardless of the wiring layout of the facility.



Technical Specifications:

Weight	60 g		
Dimensions	W:80 mm	H:80 mm	D: 20 mm
Raw Material	Polycarbonate + ABS		
Color	White		
Port	RJ9 Socket		
Power Supply	12 V Battery (WB-01) / 12 V DC external Adapter (WB-01/P)		
Battery Type	23A Alkaline		
Battery Life	6 months		
Wireless Range	100 meters radius outdoors		
Wireless Frequency	433 MHz		
Operating Temperature	-10°C ~ +50° C		
Operating Humidity	30% ~ 80% RH		
Mounting	Flush/Surface		

WIRELESS NCS- PEAR PUSH SWITCH (PBW-01)

PBW-01 is the pear push nurse call switch attached to the wireless patient's panel (WB-01/02/P) via an RJ-9 coiled phone cord.

Pushing the PBW-01 pear push switch activates a Nurse call on the Wireless Staff Console alerting the management staff of the call.

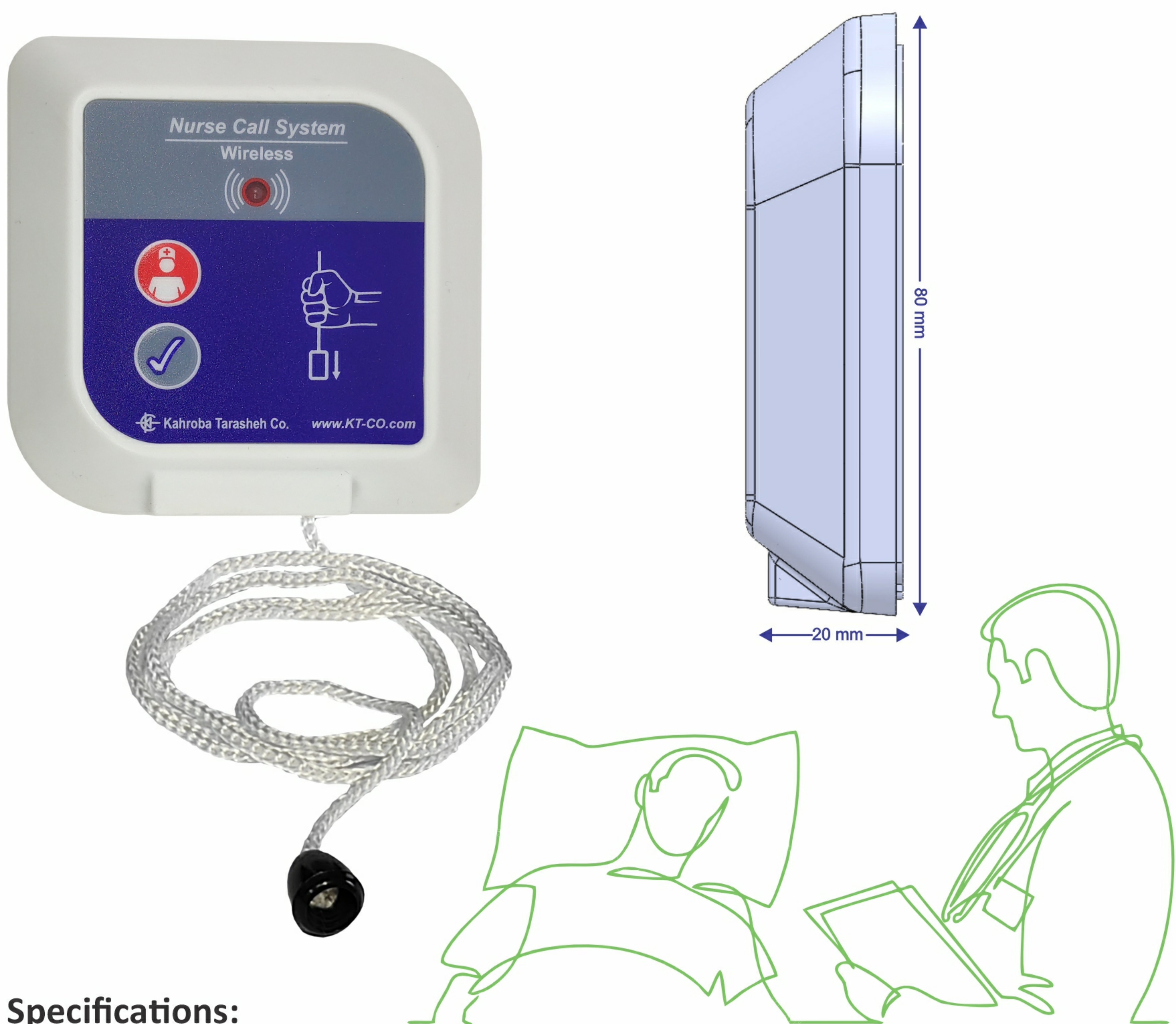


Technical Specifications:

Weight	75 g		
Dimensions	W:40 mm	H:100 mm	D: 28 mm
Raw Material	Polycarbonate +ABS		
Power Supply	12 VDC		
Color	White		
Connection	RJ9 Plug		
Cable Length	3.5 m		
Operating Temperature	-10°C ~ +50°C		
Operating Humidity	30-% ~ 80% RH		
Mounting	Tabular at the bedside/Wall		

WIRELESS NCS- WIRELESS PULL CORD SWITCH (WT-01)

WT-01 is used in patient's bathroom, shower or similar areas making the call easier by pulling the cord and therefore activating a Nurse call on the management Staff Display .
WT-01 comes with a Cancel/Presence switch on the panel and is powered by a battery to prevent any electrical shock due to wet environment. It has ingress protection rating (IP) against liquids up to IPX5.


Technical Specifications:

Weight	60g		
Dimensions	W: 80 mm	H: 80 mm	D:20 mm
Raw Material:	Polycarbonate + ABS		
Color	White		
Power Supply	12 V Battery		
Battery Type	23A Alkaline		
Battery Life	6 Months		
Wireless Range	100 meters radius outdoors		
Wireless Frequency	433 MHz		
Cord Capacity	Max 20 Kg		
Operating Temperature	-10°C ~ +50°C		
Operating Humidity	30-% ~ 80% RH		
Mounting	Surface/Flush		