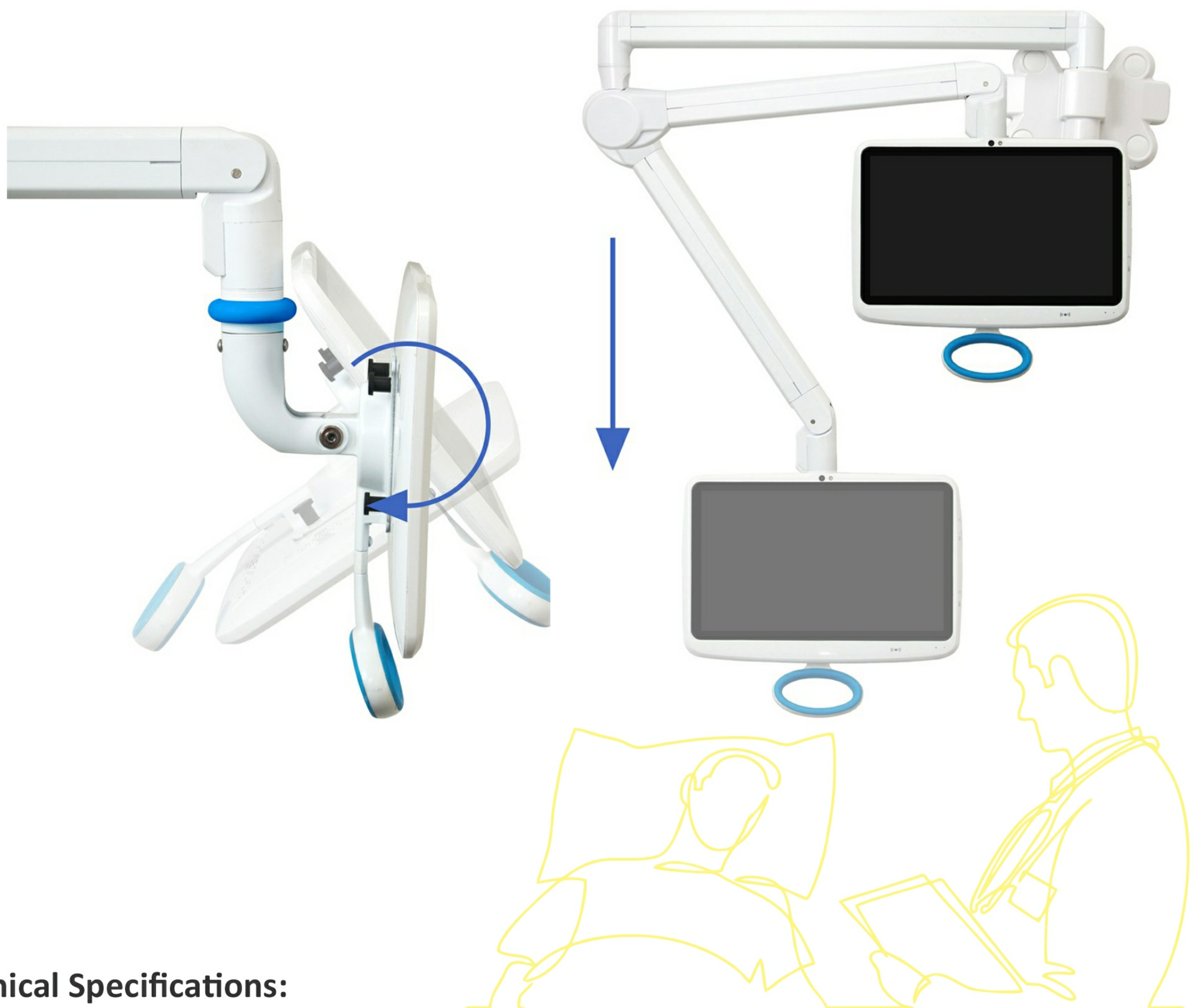


INFOTAINMENT SYSTEM – EXTENDED REACH ARTICULATED ARM-(MAR-02)

The Patient's All-in-One is attached to a fully flexible wall-mounted/floor-standing articulated arm equipped with Roller /Thrust bearings and compression springs for precision and ease of handling.

The arm supports tilt, swivel and pivoting rotations along with vertical displacement and height adjustment to render proper placement of the display in front of the patient.

It comes with integrated cable management and folding mechanism to provide more workspace efficiency and better look.


Technical Specifications:

Weight	9500 g		
Dimensions	175 x 1890 x 840 mm (Full Extension: 1780 mm)		
Raw Material	Steel, Aluminum, Plastic		
Color	White		
VESA Compatible Size	75 x 75 mm, 100 x 100 mm		
Max. Weight Capacity	8 Kg		
Screen Movement	Tilt: 0~90°	Swivel: ±180°	Rotation: ±180 °
Screen Size Compatibility	17 “ ~ 32”		
Mounting	Surface Wall Mounted		