

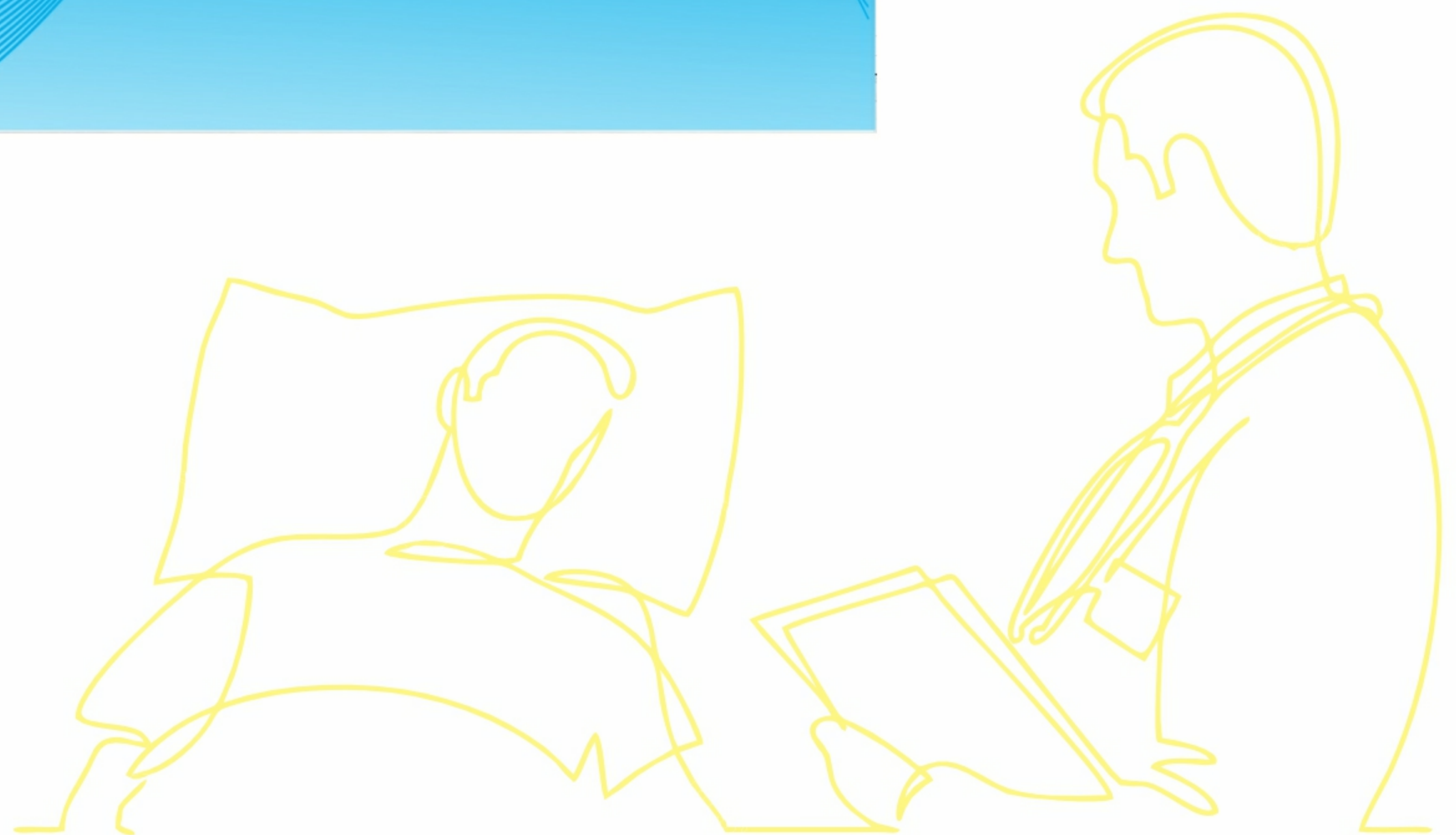
INFOTAINMENT SYSTEM - ALL-in-One -Client SOFTWARE

This is the Linux-based client application installed on the patients' ALL-in-Ones. It can play different types of media (Television, Radio, Movies, Music, etc.) or provide internet access for applications like browsing, catering, audio / visual communication, etc.

The Nurse Call tab can function as :

- Critical: When the patient is defined as critical CUI-41
- Emergency: Pressed by the staff after authentication
- Normal: Pressed by the patient

The Patient menu displayed on the ALL-in-One will be replaced with the staff menu after the bed is chosen by the staff at the room terminal (RT-02). The granted access level in Staff menu depends on the RFID card type presented at room terminal.



Technical Specifications:

Operating System	Linux
Processor	ARM 32bit
RAM	2 GB
Port	Ethernet, USB, WIFI ,AUX , Bluetooth , 8pin GX16(Male)
Resolution	FULL HD 1920*1080