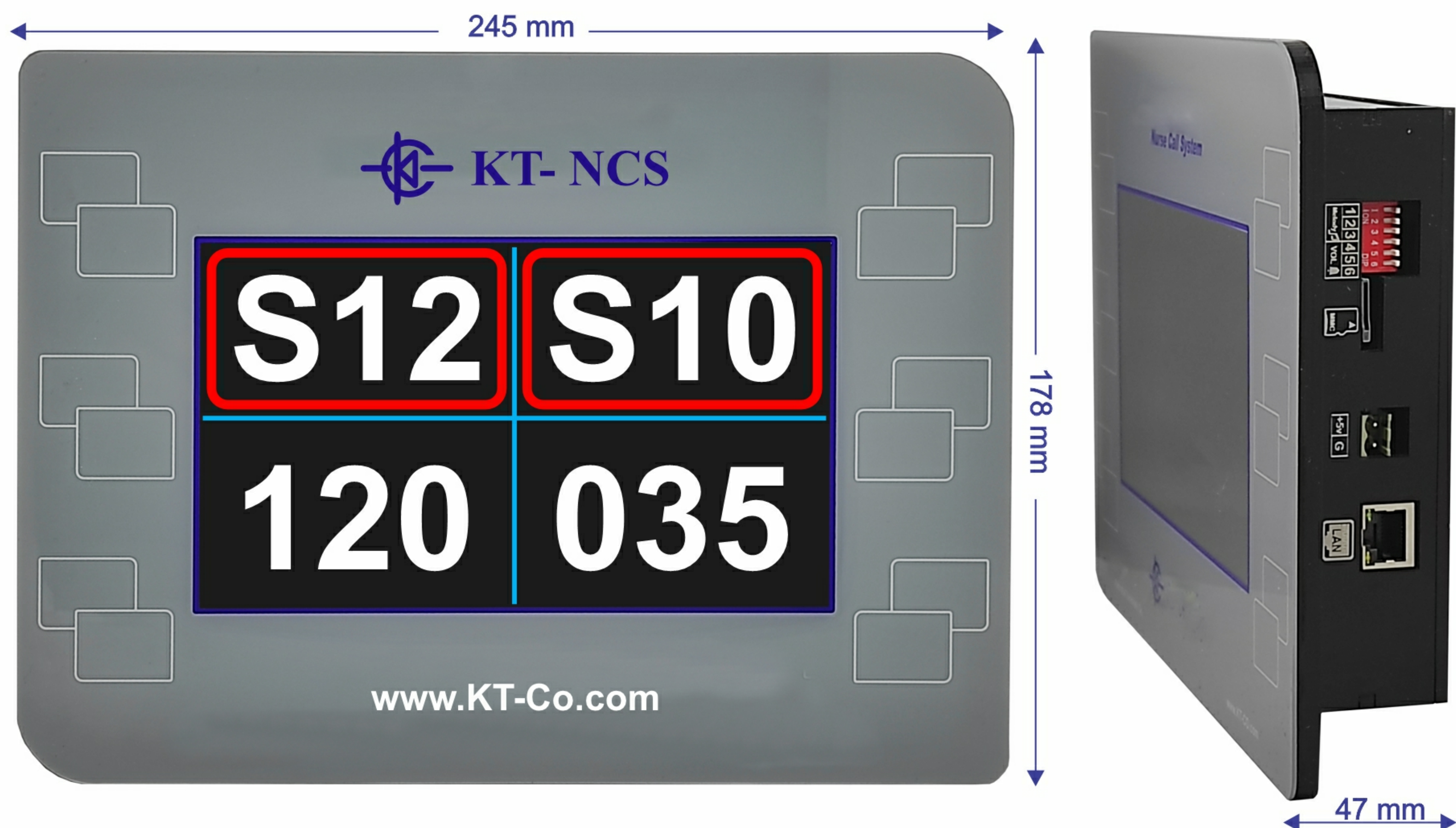


BASIC NCS-STAFF DISPLAY UNIT (CUN-02)

CUN-02 is the staff console for the BASIC NCS with the capability to show four initiated calls in a queue of 120 in 2 priority levels. The higher priority calls are displayed with a colored rectangle starting from top left and ending in bottom right in chronological order. It connects to the terminal box through the LAN network of the hospital via its RJ45 socket .It has an internal speaker to make acoustic notification alarm for an incoming call with custom melodies stored on its Micro-SD card. It is capable to store the log of the last 30 calls in its memory for reporting purposes incase the dedicated logging computer is off-grid for a limited time.

The content of CUN-02 is provided by the terminal box (TBN-02) via local network.



Technical Specifications:

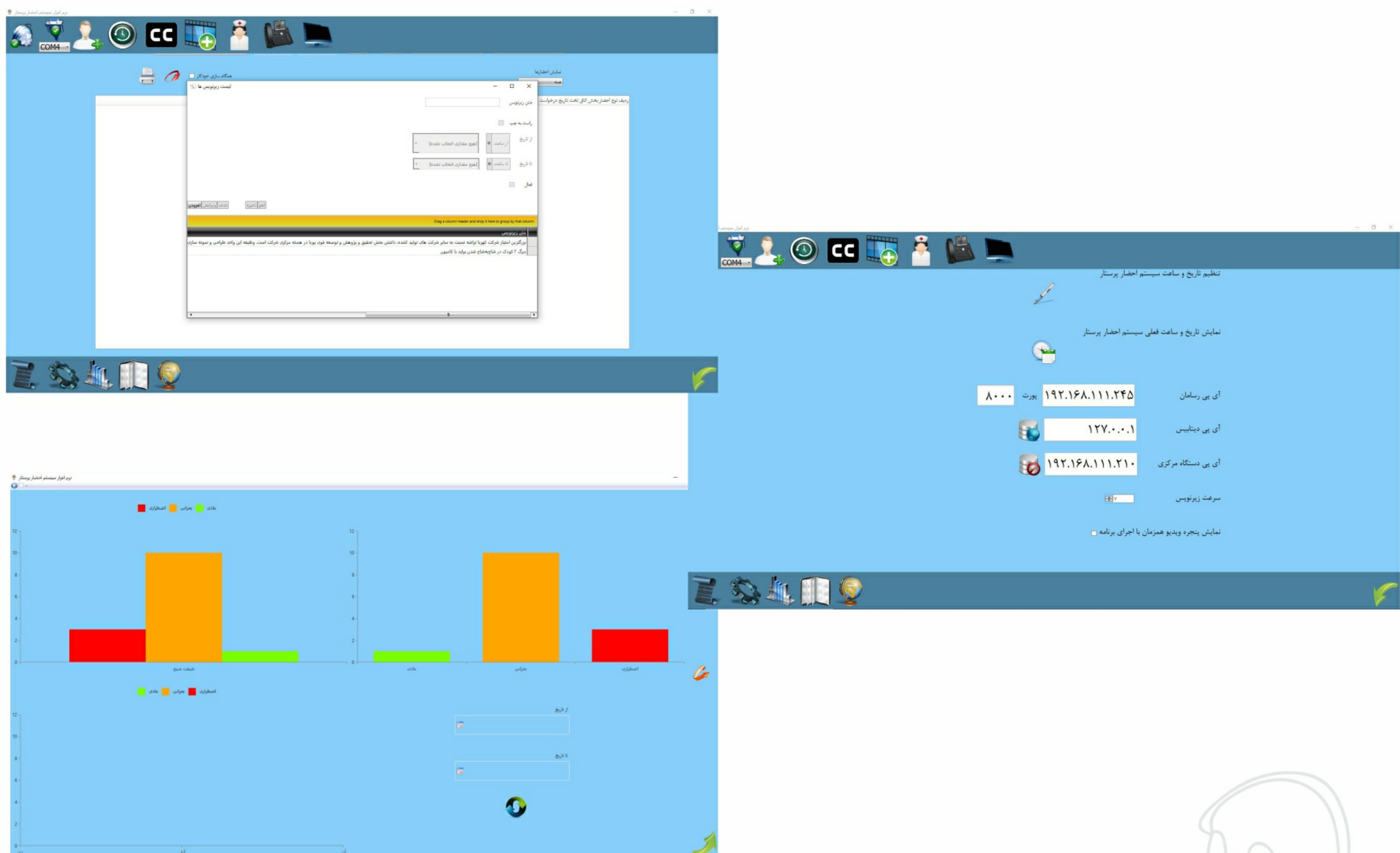
Weight	918 g		
Dimensions	W: 245 mm	H: 178 mm	D: 47 mm
Raw Material	Plexiglass + Plexiprint		
Color	White		
Power Supply	5 V via external AC adapter		
Display Type	7-inch TFT		
Internal Speaker	2 W, 8 Ohms		
Port	RJ45 via Crossed Cable		
Operating Temperature	-10°C ~ +50° C		
Operating Humidity	30% ~ 80% RH		
Mounting	Surface		

BASIC NCS- MANAGEMENT REPORTING S.W.(CUS)

CUS is the management software connecting one or several staff consoles to the management report displaying unit through hospital LAN.

It can Record, Monitor and Analyze Call types, Staff Performance, Call Response Delay and Call Breaches in any given time period. The reports can be in PDF format or column charts. It also provides the means to associate the RFID tags to the staff for reporting purposes.

The managers can sort/ filter the call reports by their priority level.



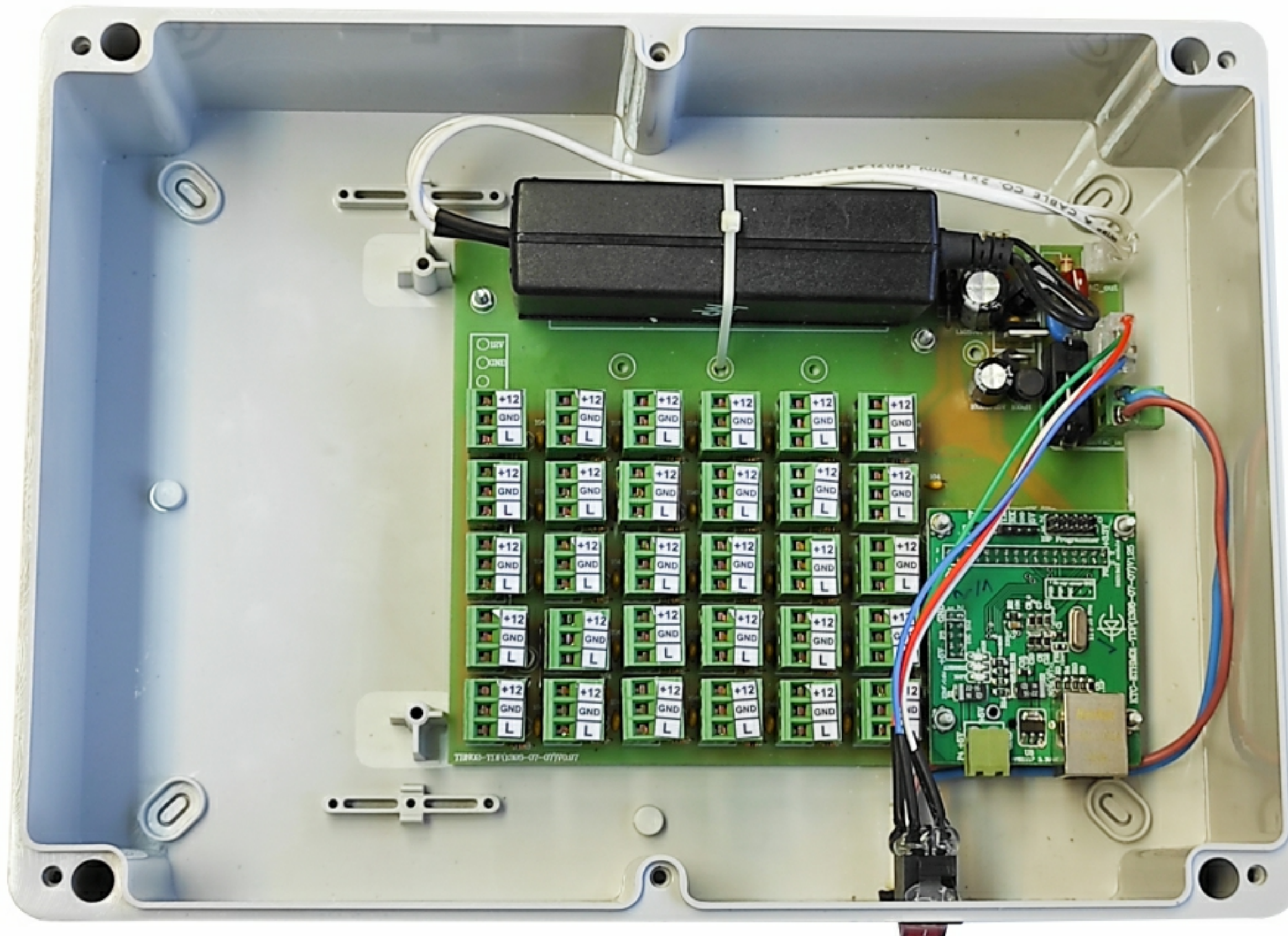
Technical Specifications:

Required Operating System	Windows 10/Server
Required H.D.D.	Min.120 GB
Required RAM	Min 4G
Required Hardware	Ethernet Port
Required Processor	Min Core i3 or equivalent
Centralized Database	MS SQL

BASIC NCS – TERMINAL BOX (TBN-02)

TBN-02 is the interface between the patients' panels and the CUN-02 staff console in the BASIC NCS.

One TBN-02 can support up to 30 calling points any number of calling points between 1 and 30 of which can be considered as higher priority to be displayed with a colored border on the CUN-02 staff display with higher priority than the remaining calling points.

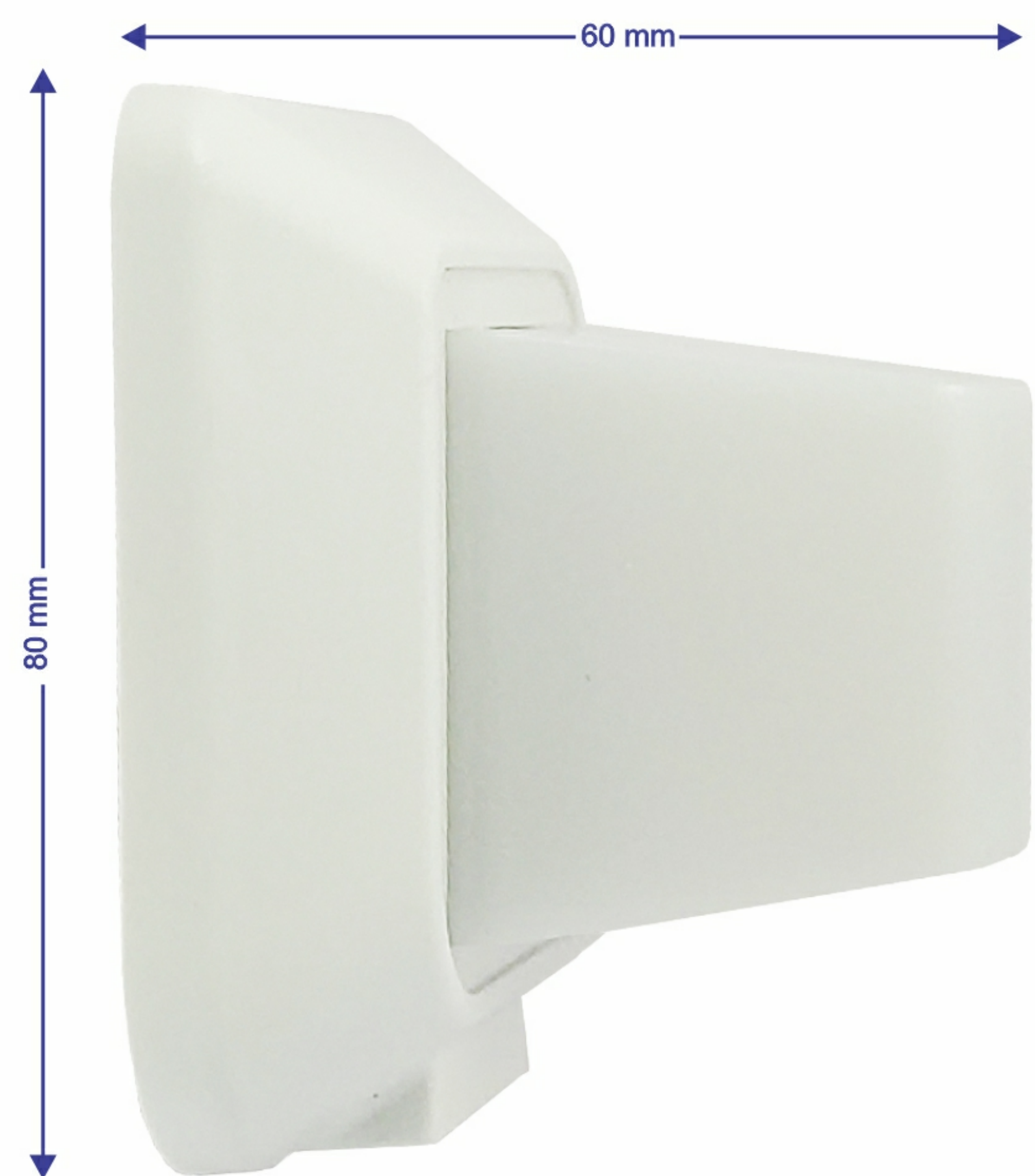


Technical Specifications:

Weight	1388 g		
Dimensions	W: 300 mm	H:95 mm	D: 220 mm
Raw Material	ABS		
Power Supply	220 ~ 240 VAC , 0.2 A (50 HZ)		
Color	Grey		
Port1	RJ45 connector to Display Corridor (CUN-02)		
Operating Temperature	-10°C ~ +50°C		
Operating Humidity	30% ~ 80% RH		
Mounting	Surface (Max. 3 meters from Staff Console)		

BASIC NCS- CORRIDOR STATUS LIGHT (ODL-19)

ODL-19 is a wedge-shape corridor light noticeable from 5 angles which is installed above the patients' room door in the corridor.
It has one Steady Green LED Light color that will illuminate in case of a Nurse Call.
The light is OFF when no Nurse Call has been activated or after Cancel/Presence Switch has been activated after the call.



Technical Specifications:

Weight	70g		
Dimensions	W: 80 mm	H:80 mm	D: 60 mm
Raw Material	Polycarbonate+ ABS		
Color	White		
Power Supply	12 V		
Light Type	LED		
LED Color	Green		
Operating Temperature	-10°C ~ +50°C		
Operating Humidity	30-% ~ 80% RH		
Mounting	Flush/Surface		

BASIC NCS-PATIENT PANEL (PBCN-13 & PBC-12 & PBCN-11)

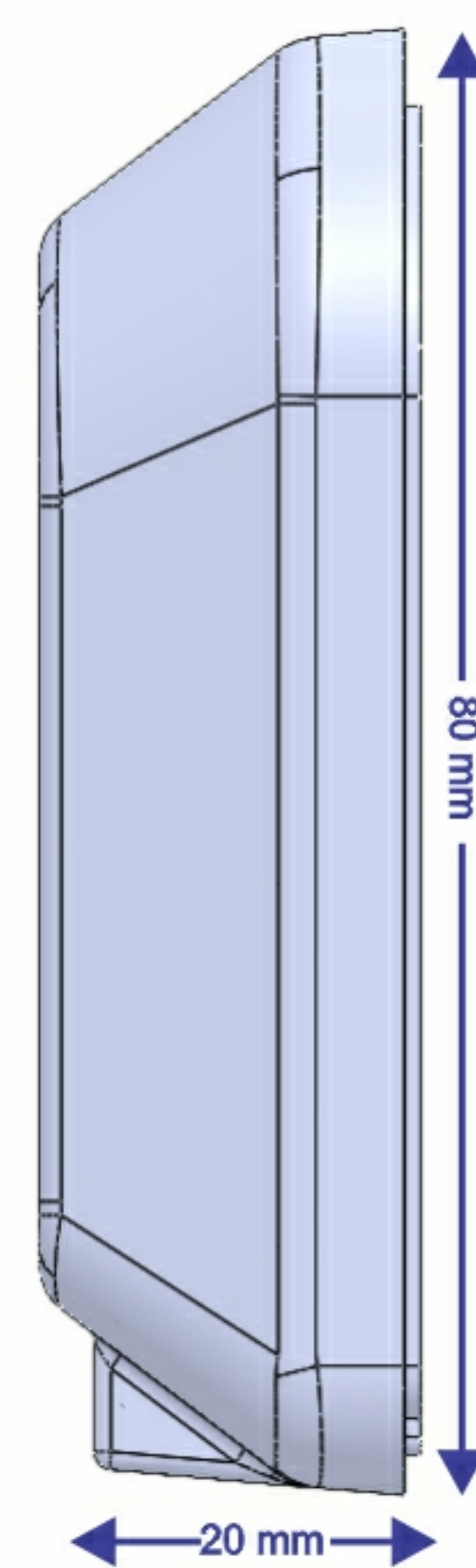
PBCN-11 and PBC-12 Patient panels come with a military socket for connection to the patient pear push Nurse Call Switch (PB-03).

PBCN-11 has an additional Cancel/Presence switch whereas PBC-12 has a Nurse Call switch next to the socket.

PBCN-13 has a Nurse Call and a Cancel/Presence switch and no military socket.



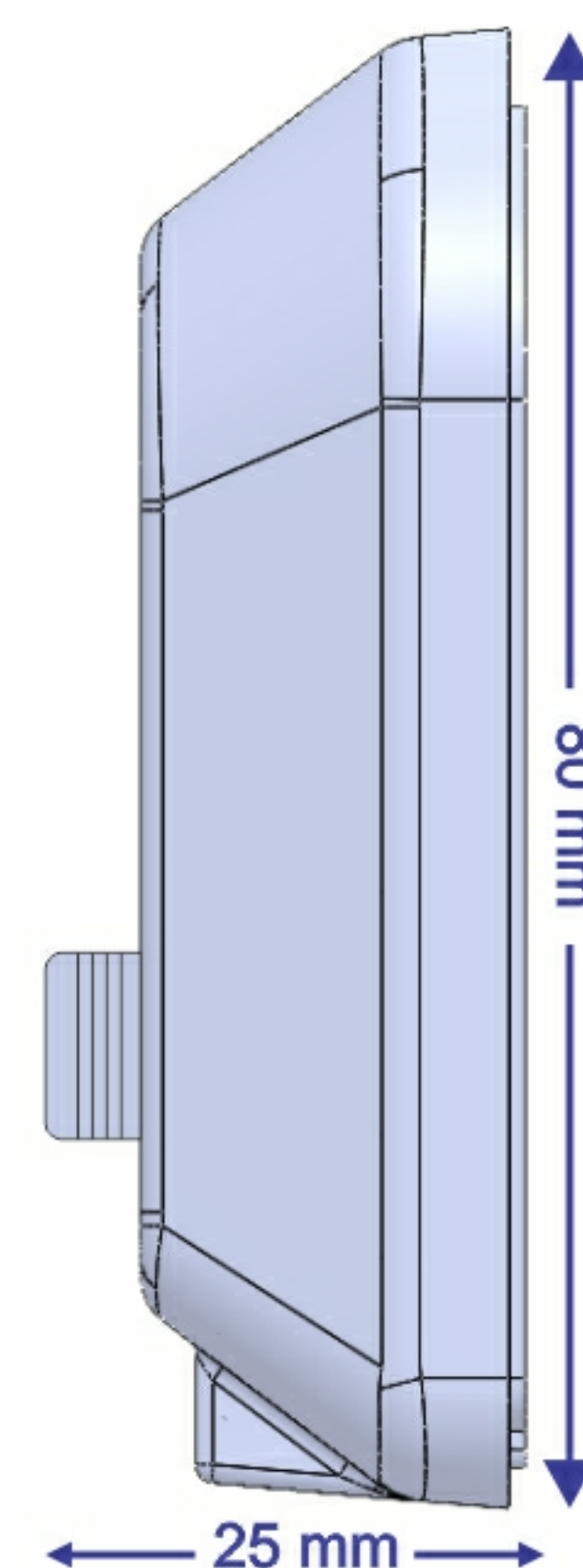
PBCN13



PBC12



PBCN11

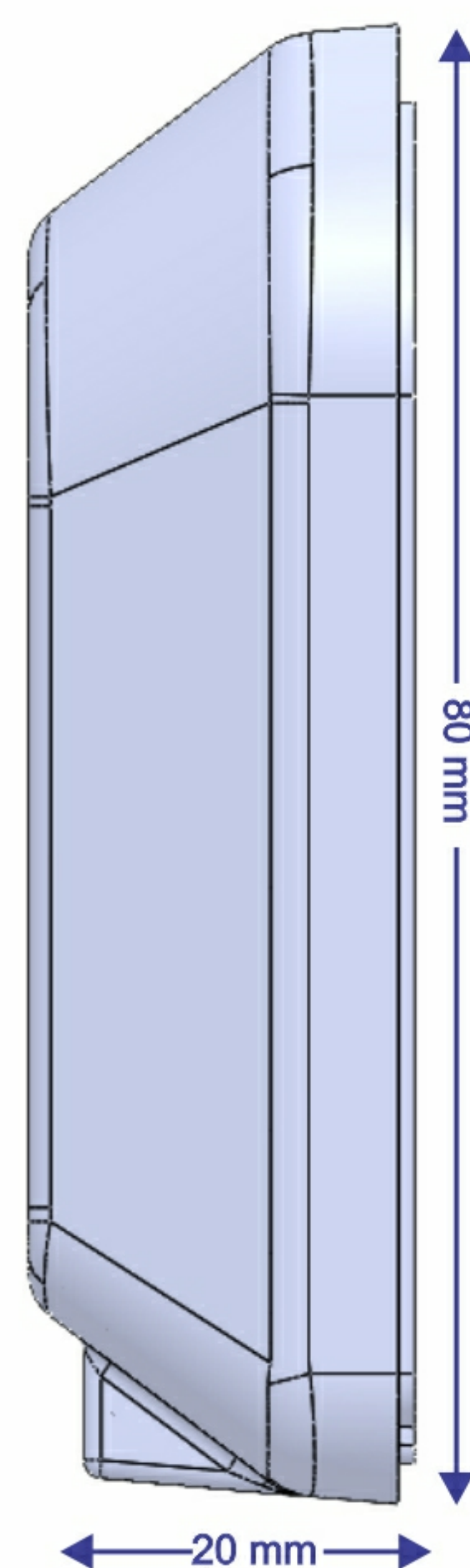


Technical Specifications:

Weight	PBCN-13: 61 g	PBC-12:68 g	PBCN-11:69 g
Dimensions	W:80 mm	H:80 mm	D: 20 mm
Raw Material	Polycarbonate + ABS		
Color	White		
Connection	5-Pin Military Gx16 (Male)		
Power Supply	12 V		
Port	5-Pin Male (Gx16-5) Military connector		
Operating Temperature	-10°C ~ +50° C		
Operating Humidity	30% ~ 80% RH		
Mounting	Flush/Surface		

BASIC NCS-PATIENT PANEL (PBCN-14)

PBCN-14 Patient panel comes with an RJ9 socket for connection to the patient pear push Nurse Call Switch (PB-04). It comes with a cancel/Presence switch.



Technical Specifications:

Weight	60 g		
Dimensions	W: 80 mm	H: 80 mm	D: 20 mm
Raw Material	Polycarbonate + ABS		
Color	White		
Connection	RJ9 Socket		
Power Supply	12 V		
Operating Temperature	-10°C ~ +50° C		
Operating Humidity	30% ~ 80% RH		
Mounting	Surface/Flush		

BASIC NCS- PEAR PUSH SWITCH(PB-03)

PB-03 is the pear push nurse call switch attached to the patient's panel (PBC-12 or PBCN-11) via a coiled cord secured by a 5-pin military socket preventing detachment from the panel by any jolt.



Technical Specifications:

Weight	150 g		
Dimensions	W:40 mm	H:100 mm	D: 28 mm
Raw Material	Body: Polycarbonate +ABS Coiled Cable: PUR		
Power Supply	12 VDC		
Color	White		
Connection	5-Pin Military Gx16 (Female)		
Cable Length	4 m		
Operating Temperature	-10°C ~ +50°C		
Operating Humidity	30-% ~ 80% RH		
Mounting	Tabular at the bedside/Wall		

BASIC NCS- PEAR PUSH SWITCH(PB-04)

PB-04 is the pear push nurse call switch attached to the wireless patient's panel (PBCN-14) via a phone coiled cord with Rj-9 plug.

Pushing the PB-04 pear push switch activates a Nurse call on the Staff Console alerting the management staff of the call.



Technical Specifications:

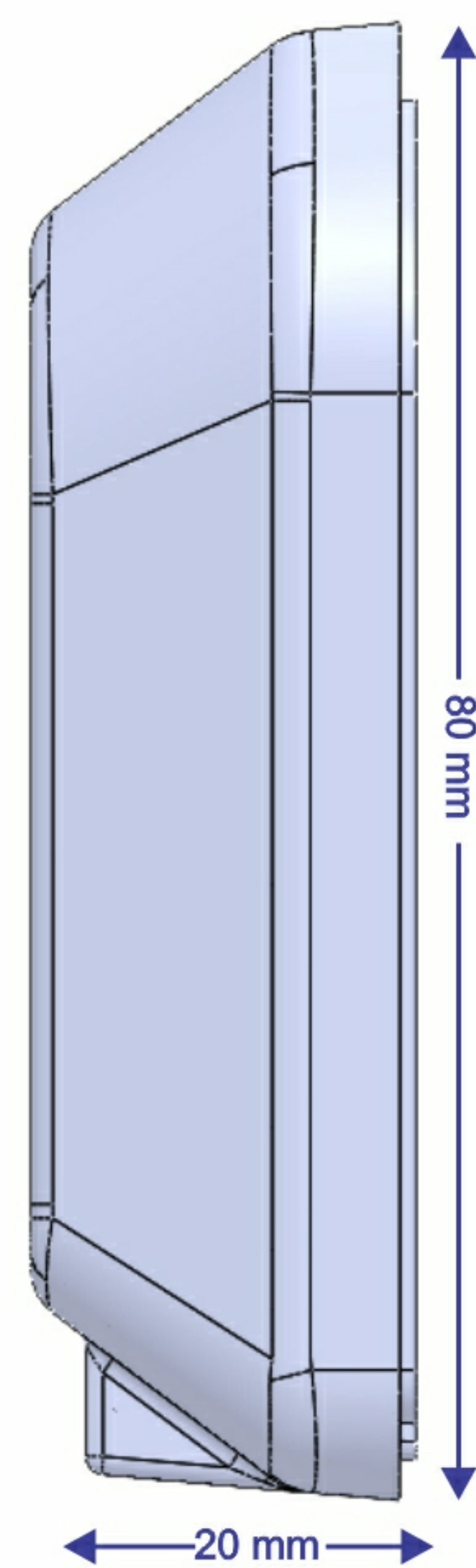
Weight	75 g		
Dimensions	W:40 mm	H:100 mm	D: 28 mm
Raw Material	Polycarbonate +ABS		
Power Supply	12 VDC		
Color	White		
Connection	RJ9 plug		
Cable Length	3.5 m		
Operating Temperature	-10°C ~ +50°C		
Operating Humidity	30-% ~ 80% RH		
Mounting	Tabular at the bedside/Wall		

BASIC NCS-PULL CORD SWITCH (TB-12)

TB-12 is used in patient's bathroom, shower or similar areas making the call easier by pulling the cord and therefore activating a Nurse call on the management Staff LCD Display (CUN-02)

TB-12 normally comes with a Nurse call switch on the panel to be used as an alternative to the Pull-cord one.

TB-12 has ingress protection rating (IP) against liquids up to IPX5.

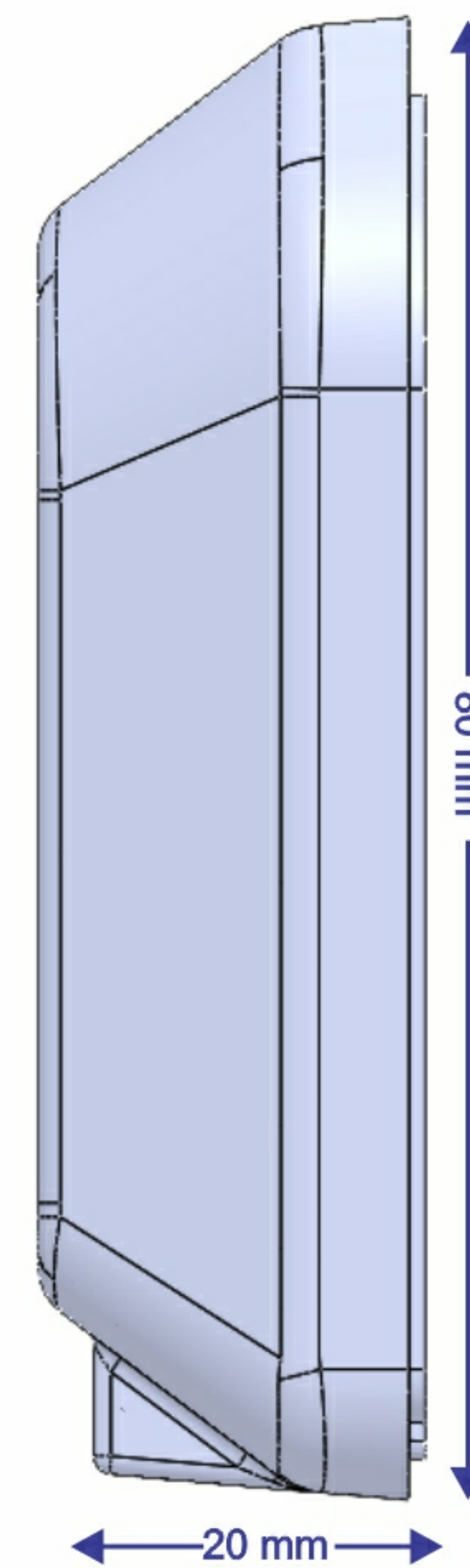


Technical Specifications:

Weight	58 g		
Dimensions	W: 80 mm	H: 80 mm	D:20 mm
Raw Material:	Polycarbonate + ABS		
Color	White		
Power Supply	12 V		
Cord Capacity	Max 20 Kg		
Operating Temperature	-10°C ~ +50°C		
Operating Humidity	30-% ~ 80% RH		
Mounting	Surface/Flush		

BASIC NCS-Cancel/Presence Switch (CBN -11)

CBN-11 is a Cancel/Presence switch usually installed by the door of the patients' room. It can cancel the Nurse Calls activated from the Patient's handset (PB-03/04), Pull Cord Switch (TB12) or Patient Console Switches (PBCN-13 & PBC-12). The nurse will use CBN-11 after a call has been taken care of and there is no more activated call associated with the room.



Technical Specifications:

Weight	58 g		
Dimensions	W: 80 mm	H: 80 mm	D: 20 mm
Raw Material	Polycarbonate + ABS		
Color	White		
Power Supply	12 V		
Operating Temperature	-10°C ~ +50° C		
Operating Humidity	30% ~ 80% RH		
Mounting	Surface/Flush		